

SUSTAINABLE REMEDIATION FORUM

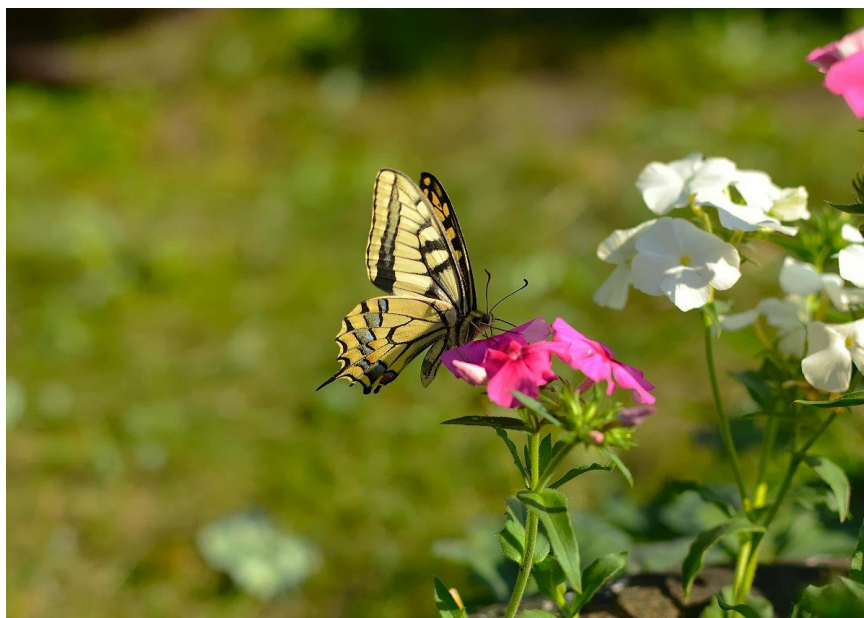
June 2024 Newsletter



Last But Not Least: SURFers Break a Norm at Battelle

Anyone who has attended or presented at any conference knows this reality: energy depletes and audience numbers lessen by the last day. That's why it was refreshing to see so many people show up and ask great questions when SURFers chaired and presented in some of the last sessions on the last day at the recent Battelle conference. Former SURF At-Large Trustees Rick Wice (Battelle) and Roy Thun (Broadbent & Associates, Inc.) each chaired a session – Climate Resilience and Site Remediation and Aligning Remediation Goals with Environmental, Social, and Governance (ESG) Considerations, respectively. The presentations and discussions throughout these sessions focused on the value achieved when remediation projects approach their work

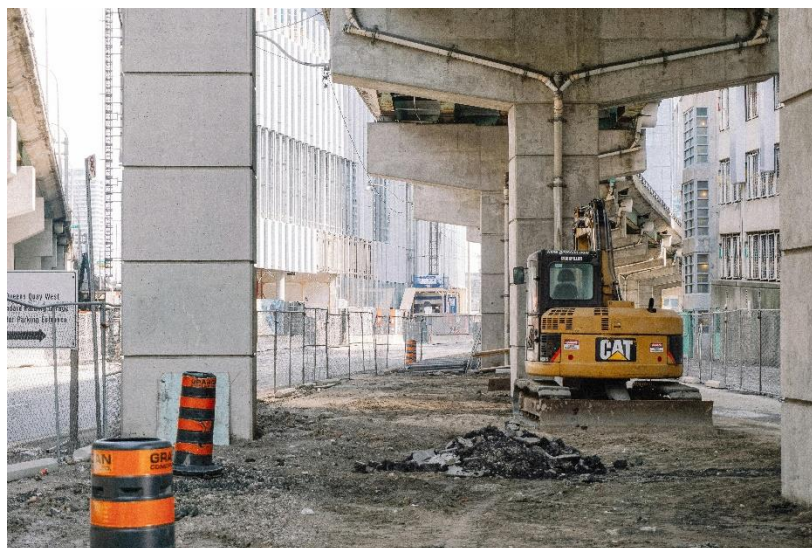
with a more holistic perspective – whether by considering corporate sustainability goals, larger climate change considerations, greenhouse gas emissions, or social impacts.



Dive In! EPA Develops Sustainability Resources for Enforcement

In case you missed it – like us! – the EPA’s Office of Enforcement and Compliance Assurance (OECA) issued *Climate Enforcement and Compliance Strategy* in September 2023 (click [here](#)). The strategy supports the OECA’s direction to the Office of Site Remediation Enforcement (OSRE) to incorporate climate adaptation and resilience principles into all enforcement activities to protect human health and the environment. The same month, OSRE issued a memorandum that includes an introduction to each of the following principles: climate change adaptation, mitigation, and resiliency; environmental justice; indigenous knowledge; and the concepts of ecosystem services, greener cleanups, long-term stewardship, and sustainable reuse. Attachments to the memo include case studies that incorporate the principles into the remedial process (click [here](#)) and a Sustainable Resources Library. The library is a downloadable, read-only Excel spreadsheet that provides links to resources for

each principle and cross references each principle with the National Contingency Plan's nine evaluation criteria and RCRA (click [here](#)).



Did You Know? Using Infrastructure Protocol to Assess Remedy Resilience

Did you know that the first Pyrex prototype used temperature-resistant glass in railroad lanterns and battery jars? Adapting a technology or approach from one field to another helps spur innovation and implementation. Former SURF President Betsy Collins (Jacobs) demonstrated this concept in her presentation *Conducting a Climate Change Resilience Assessment in Support of Remedy Selection* at Battelle this month. The climate change resilience assessment was completed using a commensurate approach to the Public Infrastructure Engineering Vulnerability Committee Protocol (PIEVC). The PIEVC is a structured, robust qualitative methodology used to evaluate the interactions between climate parameters and infrastructure assets and operations, including broader social and environmental systems.

At a site in Canada, nine climate events with quantified data for current (past 30 years) and future climate scenarios were selected based on their potential interaction and potential to affect the safety, efficacy, and environment of the

proposed remedial options. Of the six alternatives considered, one was determined to have high resiliency and five were determined to have moderate resiliency. These results will be incorporated into the final remedy selection process and, whichever remedy is selected, the remedial design.

Upcoming Events

SURF Events

SURF Webinar - Mark Your Calendar!

July 17, 2024

11:00 a.m. – 12:00 p.m. EDT

More information and registration link coming soon!

Conferences

AEHS East Coast Conference:

40th Annual International Conference on Soils, Sediments, Water, and Energy

October 21 - 24, 2024

Amherst, MA

Click [here](#) for more information and to register.

JOIN SURF